



HID ignitors for series systems

SN 58 220-240V 50/60Hz

HID ignitors for series systems

Product data

• General Characteristics

Application code	58
Rated Lamptype	SON/CDM/MH/HPI
Rated Number of Lamps	1 piece
Rated Ballast-Lamp Power	35-400
Line Voltage	220-240 V
Line Frequency	50/60 Hz
Housing	SNI-85

• Operating Characteristics

Ignition type	Semi-Parallel
Number of ignition pulses	2 x
Ignition Voltage	5.00 (max) kV
Response voltage	190 V
Mains voltage safety (AC)	-10%/+10%
Mains voltage performance (AC)	-8%/+6%
Power losses gear	0.5 W

• Wiring Characteristics

Cable-Cap wires device/lamp	2 nF
Connector type	Screw
Striplength	6.0 mm
Wcs Ballast contacts	0.70-2.50 mm2

• Temperature Characteristics

T-case maximum	90 (max) C
----------------	------------

T-ambient	-20 (min), 85 (max) C
T-storage	-25 (min), 80 (max) C

• Product Dimensions

Length A1	84.5 mm
Fixing Hole Distance	65.0 mm
Length A2	
Width B1	41.0 mm
Height C1	38.0 mm
Fixing Hole Diameter D1	4.3 mm

• Approval & Application Chars

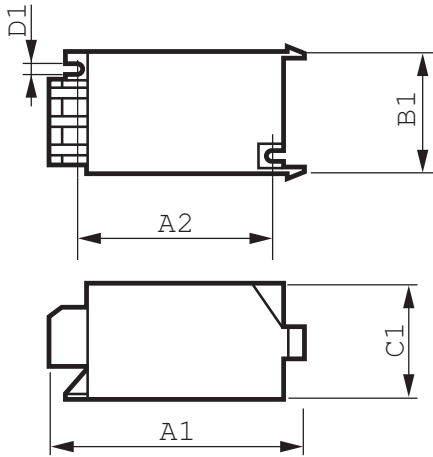
CE marking	Yes
ENEC certificate	Yes

• Product Data

Order code	913619579966
Full product code	913619579966
Full product name	SN 58 220-240V 50/60Hz
Order product name	SN 58 220-240V 50/60Hz
Pieces per pack	1
Packing configuration	48
Packs per outerbox	48
Bar code on pack - EAN1	8711500915566
Bar code on outerbox - EAN3	8711500907554
Logistic code(s) - 12NC	913619579966
Net weight per piece	0.040 kg

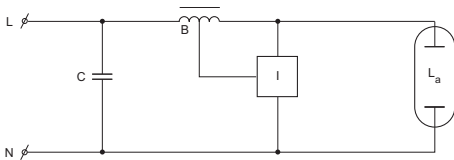
PHILIPS

Dimensional drawing



SN 58 220-240V 50/60Hz

Product	A1 (Norm)	A2 (Norm)	B1 (Norm)	C1 (Norm)	D1 (Norm)
SN 58 220-240V 50/60Hz	84.5	65.0	41.0	38.0	4.3



© 2014 Koninklijke Philips N.V. (Royal Philips)
All rights reserved.

Specifications are subject to change without notice. Trademarks are the property of Koninklijke Philips N.V. (Royal Philips) or their respective owners.

www.philips.com/lighting

2014, April 11
data subject to change