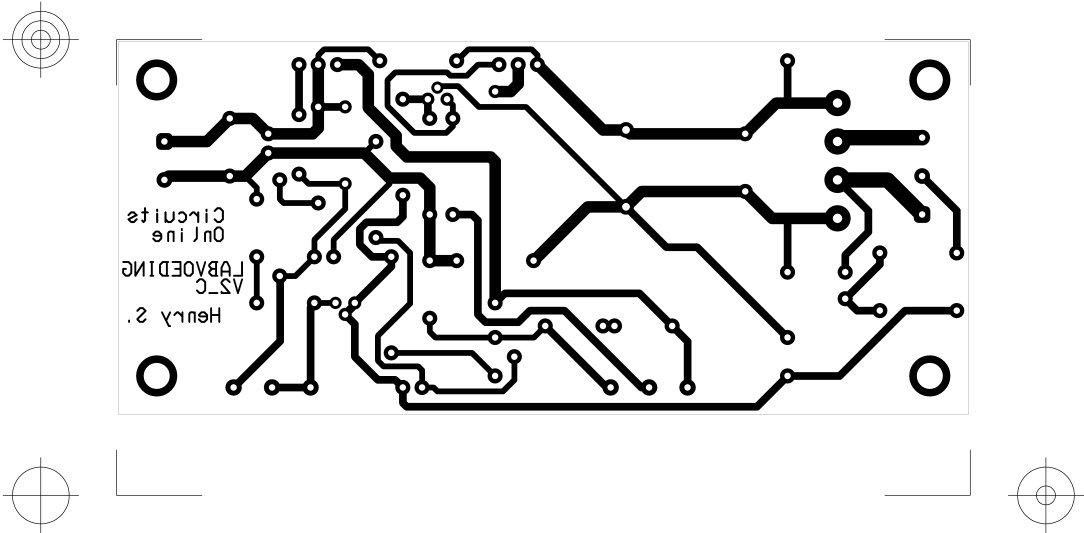
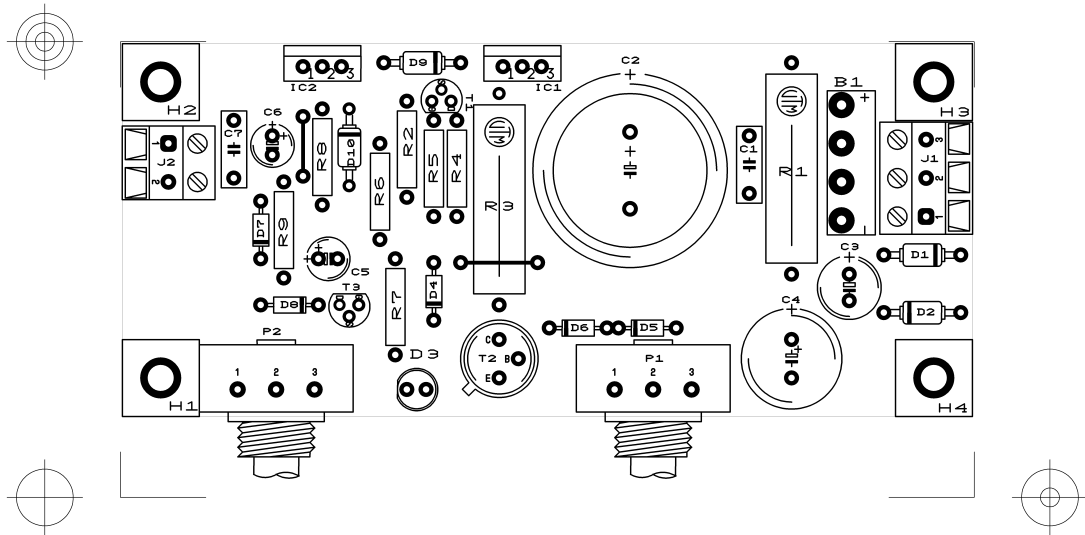


REV: 2	DATE: 20-03-2006	ENG: HS
REV: 1	DATE: 13-03-2006	ENG: HS
PROJECT: CO LABVOEDING V2_C		
COMPANY: HES		
ADDRESS: -		
CITY: TYTSJERK		
COUNTRY: NL		
INITIAL	13-03-2006	PAGE: 1 OF: 1





B I L L O F M A T E R I A L S

Time & date: 00:33:02 08-Jan-2010

Refdes	UT_VALUE	#
B1	KBL01 - 4A	1
C2	4700uF/40V	1
C3	100uF/40V	1
C4	1000uF/25V	1
C5	10uF/40V	2
C6		
C7	100n	2
C1		
D3	Rood	1
D4	1N4148	5
D5		
D6		
D7		
D8		
D9	1N4004	4
D1		
D2		
D10		
F1	0.3AT	1
IC1	LM317T	2
IC2		
J1	3-POLE 5MM	1
J2	2-POLE 5MM	1
P1	1k	1
P2	5k	1
R1	1k/5W	1
R2	10k	2
R5		
R3	OR82/5W	1
R4	1k	2
R6		
R7	270	1
R8	120	2
R9		
SW1A	SW_DPST	2
SW1B		
T2	BC141	1
T3	BF256C	2
T1		
TR1	2x12V - 2A	1

Current processed Variant : DEFAULT