

KOMPONENTENLIJST PE 49

Weerstanden

R 1 = 6,8 K	R 23 = 1,5 K
R 2 = 2,2 K	R 24 = 5,6 K
R 3 = 12 K	R 25 = 220 Ω
R 4 = 1 K	R 26 = 4,7 Ω
R 5 = 47 Ω	R 27 = 100 Ω
R 6 = 560 Ω	R 28 = 5,6 Ω
R 7 = 47 Ω 470E	R 29 = 0,56 Ω 1,5 W
R 8 = 4,7 K	R 30 = 0,56 Ω 5 W
R 9 = 2,2 K	R 31 = 390 Ω
R 10 = 2,7 K	R 32 = 10 K
R 11 = 4,7 K	R 33 = 1 K 1 %
R 12 = 2,2 K	R 34 = 2 K 1 %
R 13 = 1,5 K	R 35 = 10 K 1 %
R 14 = 470 Ω	R 36 = 20 K 1 %
R 15 = 0,33 Ω 2,5 W	R 37 = 500 K
R 16 = 340 Ω 2,0 W	R 38 = 8,2 K
R 17 = 180 Ω	R 39 = 100 Ω
R 18 = 270 Ω	P 1 = 10 K potmeter
R 19 = 1 K	P 2 = 50 M instel
R 20 = 12 K	P 3 = 500 Ω instel
R 21 = 2,2 K	P 4 = 1 K potmeter
R 22 = 6,8 K	P 5 = 250 Ω instel

Kondensatoren

C 1 = 0,68 μF MKM	C 8 = 470 μF/35V
C 2 = 1 μF/35V	C 9 = 4,7 nF ker
C 3 = 1 nF ker	C 10 = 220 pF ker
C 4 = 22 μF/10V	C 11 = 220 μF/50V
C 5 = 22 μF/40V	C 12 = 0,33 μF MKM
C 6 = 22 μF/35V	C 13 = 4700 μF/40V
C 7 = 470 μF/35V	

Halfgeleiders

D 1 = 1N4001/2/4/7	D 11 = zener 15V gesel
D 2 = 1N4001/2/4/7	D 12 = zener 4V7
D 3 = 1N4001/2/4/7	D 13 = 1N4148
D 4 = zener 15V	D 14 = zener 5V6
D 5 = zener 15V	D 15 = 1N4001/2/4/7
D 6 = 1N4148	D 16 = 1N4148
D 7 = 1N5401/2/4	D 17 = zener 10 30V
D 8 = 1N5401/2/4	D 18 = zener 10W draadbrug
D 9 = 1N5401/2/4	D 19 = 1N5401/2/4
D 10 = 1N5401/2/4	D 20 = 1N4001/2/4/7
L1-37 = LED 3 mm rood	
T 1 = 21133	T 4 = transistor
T 2 = BD 675	T 5 = 21133
T 3 = BC 307/557	T 6 = 2N3055
IC1 = UAA 170	IC3 = UAA 170
IC2 = μA 723	IC4 = μA 709

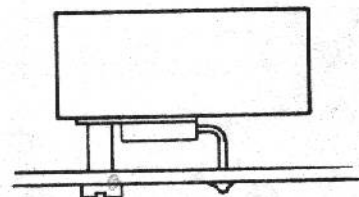
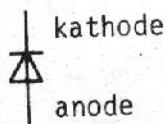
Z1 = zekering 1A

TR = transformator, $U_{sec} = 0; 22$ en $33V$

Montagematerialen voor montage van:

4 x bout M4 x 65	Trafo
8 x moer M4	
2 x bout M3 x 8	Elco
2 x moer M3	
1 x bout 1/8 x 13	
1 x moer 1/8	
1 x bout M3 x 12	Kroonsteen
1 x moer M3	
1 x bout M3 x 8	Zekeringhouder
1 x moer M3	
4 x bout M3 x 12	Chassisplaat
4 x moer M3	
4 x afstandbus 3mm	
2 x bout M3 x 12	T6 (2N3055)
3 x moer M3	
2 x isolatiering	
1 x soldeerlip	
1 x sil-pad T0-3	
4 x bout M3 x 22	Koelplaat T6
4 x moer M3	
4 x afstandbus 12mm	
1 x bout M2,6 x 16	Koelplaat T2
1 x sil-pad T0-126	
1 x afstandbus 3mm	
1 x bout M3 x 12	Koelplaat T4
1 x sil-pad T0-220	
1 x afstandbus 6mm	

De lange aansluiting van de LED is de anode.



De montage van T2 en T4.

