

Absolute Maximum Rating

Ta = 25°C

| Part No. | Power Dissipation Pd | Reverse Voltage VR | Operating Temperature Topr | Storage Temperature Tstg |
|----------|-------------------------|-----------------------|-------------------------------|-----------------------------|
| PP1101W | 30 | 15 | -30~+85 | -30~+90 |
| Units | mW | V | °C | °C |

Electro-Optical Characteristics

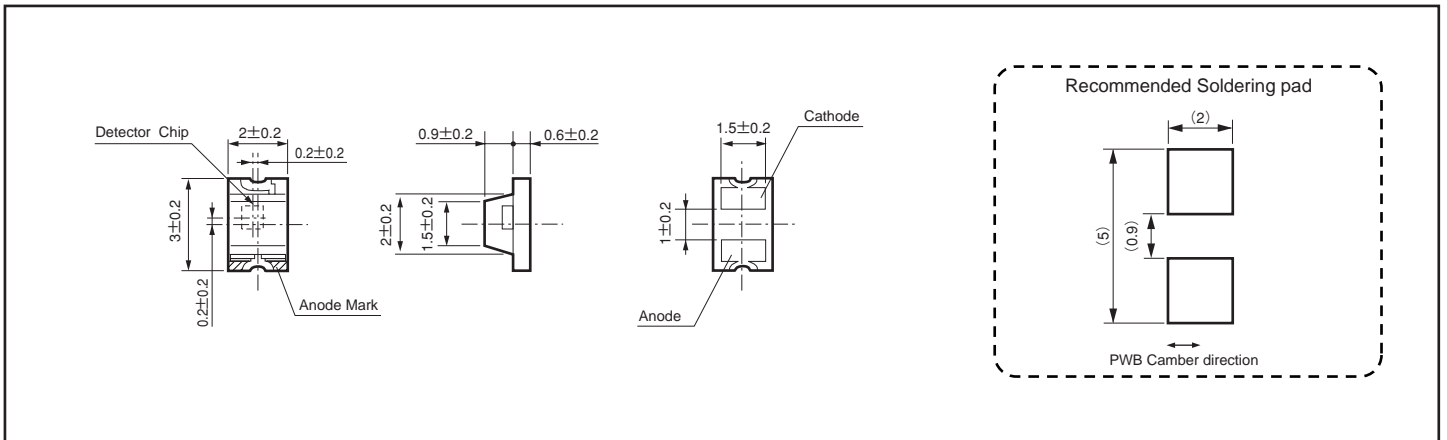
Ta = 25°C

| Part No. | Photo Current | | | Response Time | | | Capacitance ^{※1} | | Dark Current | | Peak Wavelength | | Photo Sensitivity | |
|----------|---------------|----|--------------------|---------------|----|-------|---------------------------|----|--------------|----|-----------------|----|-------------------|----|
| | TYP | VR | Ee | TYP | VR | RL | TYP | VR | MAX | VR | TYP | VR | TYP | VR |
| PP1101W | 4 | 5 | 5 | 50 | 10 | 1,000 | 3 | 10 | 10 | 10 | 950 | 0 | 0.64 | 5 |
| Units | μA | V | mW/cm ² | ns | V | Ω | pF | V | nA | V | nm | V | A/W | V |

※1 f=1MHz

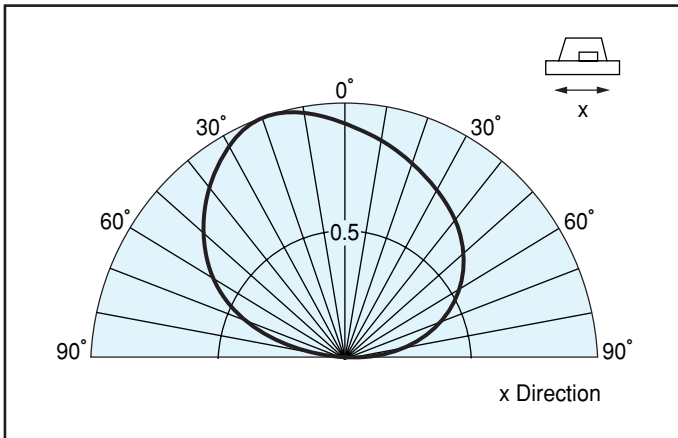
Package Dimensions

Unit : mm



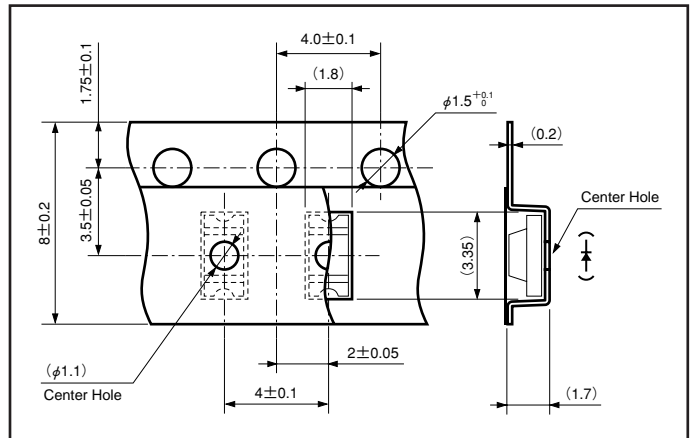
Spatial Distribution

Ta = 25°C



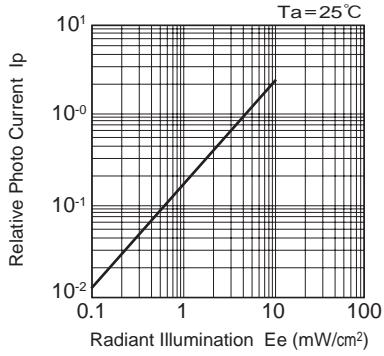
Taping Specification

Unit : mm

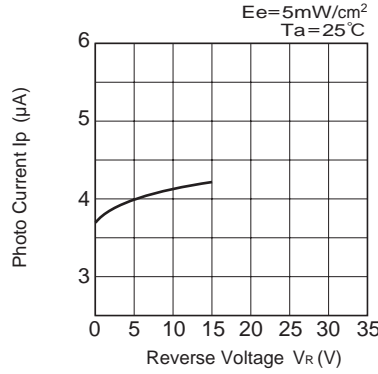


* Quantity 2,500 pcs/Reel

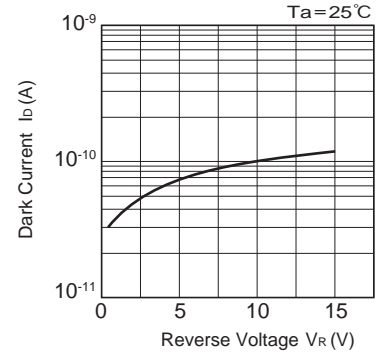
■ Radiant Illumination vs. Relative Photo Current



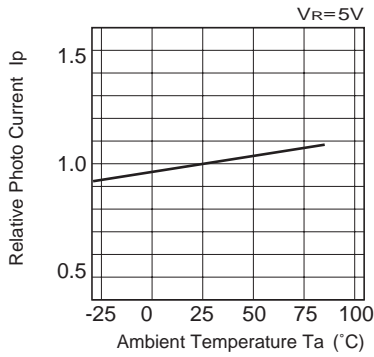
■ Reverse Voltage vs. Photo Current



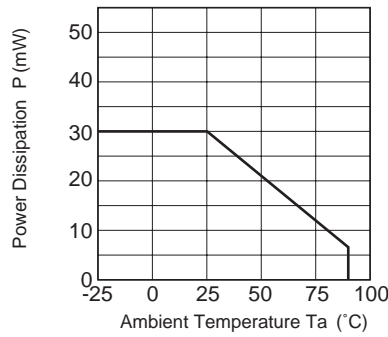
■ Reverse Voltage vs. Dark Current



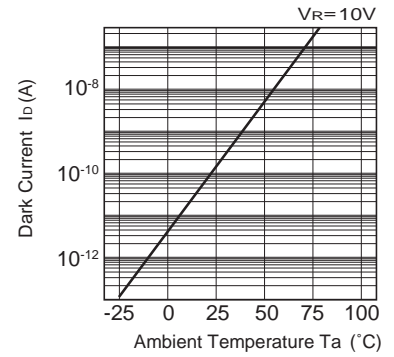
■ Ambient Temperature vs. Relative Photo Current



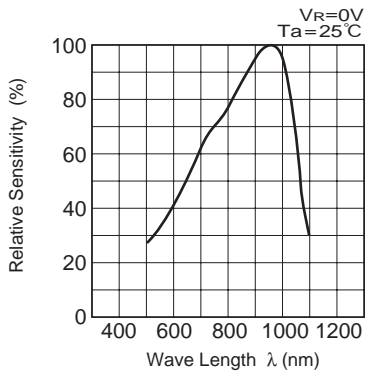
■ Ambient Temperature vs. Power Dissipation



■ Ambient Temperature vs. Dark Current



■ Spectral Sensitivity Characteristics



■ Reverse Voltage vs. Terminal Capacitance

